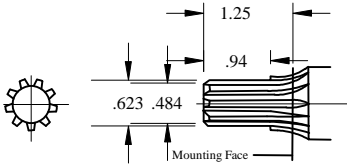


# IFP IP3100/IP5100/IP7600 SPLINE - SHAFT/SHAFT&GEAR ASSEMBLIES



## CODE 95

SAE "A" SPLINE 5/8 - 9 TOOTH -ANSI 16-4

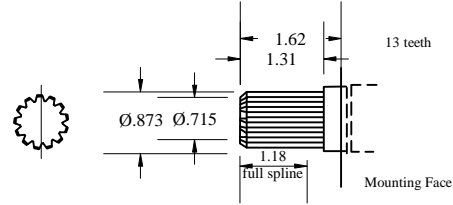


GEAR CODE	GEAR WIDTH INCHES	IP3100 SHAFT & GEAR PART NUMBER	IP5100 SHAFT & GEAR PART NUMBER	IP7600 SHAFT & GEAR PART NUMBER
05	1/2"	//		
07	3/4"	312-2907-122N		
10	1"	312-2907-122N		
12	1 1/4"	312-2907-122N		
15	1 1/2"		NOT AVAILABLE	NOT AVAILABLE
17	1 3/4"			
20	2"			

IP 3100 ONE PIECE SHAFT	312-1000-200N
IP 5100 ONE PIECE SHAFT	NOT AVAILABLE
IP 7600 ONE PIECE SHAFT	NOT AVAILABLE

## CODE 25

SAE "B" SPLINE 7/8 - 13 TOOTH -ANSI 122-4

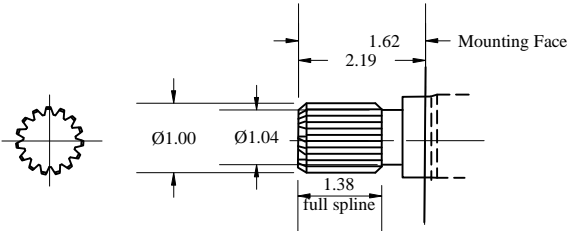


GEAR CODE	GEAR WIDTH INCHES	IP3100 SHAFT & GEAR PART NUMBER	IP5100 SHAFT & GEAR PART NUMBER	IP7600 SHAFT & GEAR PART NUMBER
05	1/2"	//		
07	3/4"	312-2907-230N		
10	1"	312-2910-230N	313-2910-230N	
12	1 1/4"	312-2912-230N	313-2912-230N	
15	1 1/2"	312-2915-230N	313-2915-230N	
17	1 3/4"	312-2917-230N	313-2917-230N	
20	2"	312-2920-230N	313-2920-230N	
22	2 1/4"	//	313-2922-230N	
25	2 1/2"	//	313-2925-230N	

IP 3100 ONE PIECE SHAFT	312-1135-138N
IP 5100 ONE PIECE SHAFT	313-1000-300N
IP 7600 ONE PIECE SHAFT	NOT AVAILABLE

## CODE 98

SAE "BB" SPLINE 1 - 15 TOOTH -ANSI 25-4

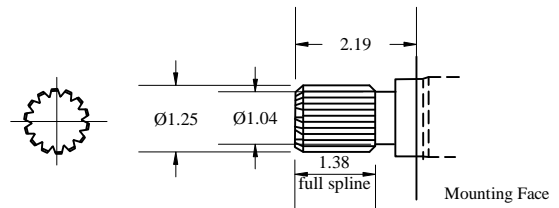


GEAR CODE	GEAR WIDTH INCHES	IP3100 SHAFT & GEAR PART NUMBER	IP5100 SHAFT & GEAR PART NUMBER	IP7600 SHAFT & GEAR PART NUMBER
05	1/2"	//		
07	3/4"	312-2907-240N		
10	1"	312-2910-240N	313-2910-240N	
12	1 1/4"	312-2912-240N	313-2912-240N	
15	1 1/2"	312-2915-240N	313-2915-240N	
17	1 3/4"	312-2917-240N	313-2917-240N	
20	2"	312-2920-240N	313-2920-240N	
22	2 1/4"	//	313-2922-240N	
25	2 1/2"	//	313-2925-240N	

IP 3100 ONE PIECE SHAFT	312-1000-240N
IP 5100 ONE PIECE SHAFT	313-1000-240N
IP 7600 ONE PIECE SHAFT	NOT AVAILABLE

## CODE 07

SAE "C" SPLINE 1 1/4 - 14 TOOTH -ANSI 32-4

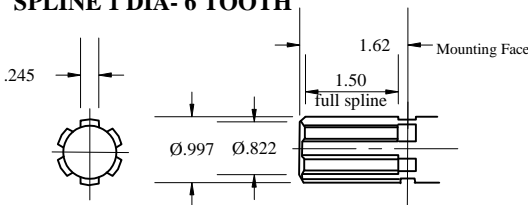


GEAR CODE	GEAR WIDTH INCHES	IP3100 SHAFT & GEAR PART NUMBER	IP5100 SHAFT & GEAR PART NUMBER	IP7600 SHAFT & GEAR PART NUMBER
05	1/2"		//	//
07	3/4"		//	//
10	1"		313-2910-250N	//
12	1 1/4"		313-2912-250N	316-2912-250N
15	1 1/2"		313-2915-250N	316-2915-250N
17	1 3/4"		313-2917-250N	316-2917-250N
20	2"		313-2920-250N	316-2920-250N
22	2 1/4"		313-2922-250N	316-2922-250N
25	2 1/2"		313-2925-250N	316-2925-250N
27	2 3/4"		//	316-2927-250N
30	3"		//	316-2930-250N

IP 3100 ONE PIECE SHAFT	312-1135-133N
IP 5100 ONE PIECE SHAFT	313-1135-133N
IP 7600 ONE PIECE SHAFT	316-1135-148N

## CODE 68

SPLINE 1 DIA- 6 TOOTH



GEAR CODE	GEAR WIDTH INCHES	IP3100 SHAFT & GEAR PART NUMBER	IP5100 SHAFT & GEAR PART NUMBER	IP7600 SHAFT & GEAR PART NUMBER
		NOT AVAILABLE	NOT AVAILABLE	

IP 3100 ONE PIECE SHAFT	312-1000-003N
IP 5100 ONE PIECE SHAFT	313-1000-002N
IP 7600 ONE PIECE SHAFT	NOT AVAILABLE