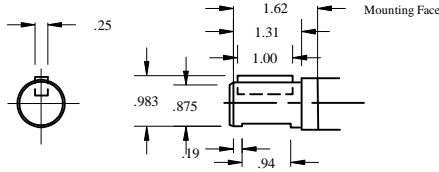


# IFP IP3100/IP5100/IP7600 KEYED- SHAFT&GEAR ASSEMBLIES



## CODE 30

SAE "B" KEYED  $\frac{7}{8}$  □ -  $\frac{1}{4}$  KEY - ANSI 22-4

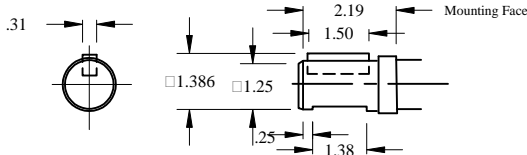


GEAR WIDTH CODE	GEAR WIDTH INCHES	IP3100 SHAFT & GEAR PART NUMBER	IP5100 SHAFT & GEAR PART NUMBER	IP7600 SHAFT & GEAR PART NUMBER
05	$\frac{1}{2}$ "		//	//
07	$\frac{3}{4}$ "	312-2907-730N	//	//
10	1"	312-2910-730N	//	//
12	1 $\frac{1}{4}$ "	312-2912-730N	//	//
15	1 $\frac{1}{2}$ "	312-2915-730N	NOT AVAILABLE	NOT AVAILABLE
17	1 $\frac{3}{4}$ "	312-2917-730N	//	//
20	2"	312-2920-730N	//	//

IP 3100 ONE PIECE SHAFT	312-1500-300N
IP 5100 ONE PIECE SHAFT	NO AVAILABLE
IP 7600 ONE PIECE SHAFT	NO AVAILABLE

## CODE 11

SAE "C" KEYED 1  $\frac{1}{4}$  □ -  $\frac{5}{16}$  KEY - ANSI 32-1

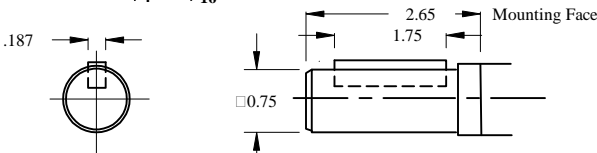


GEAR WIDTH CODE	GEAR WIDTH INCHES	IP3100 SHAFT & GEAR PART NUMBER	IP5100 SHAFT & GEAR PART NUMBER	IP7600 SHAFT & GEAR PART NUMBER
05	$\frac{1}{2}$ "		//	//
07	$\frac{3}{4}$ "		//	//
10	1"		313-2910-750N	//
12	1 $\frac{1}{4}$ "	NOT AVAILABLE	313-2912-750N	316-2912-750N
15	1 $\frac{1}{2}$ "		313-2915-750N	316-2915-750N
17	1 $\frac{3}{4}$ "		313-2917-750N	316-2917-750N
20	2"		313-2920-750N	316-2920-750N
22	2 $\frac{1}{4}$ "		313-2922-750N	316-2922-750N
25	2 $\frac{1}{2}$ "		313-2925-750N	316-2925-750N
27	2 $\frac{3}{4}$ "		//	316-2927-750N
30	3"		//	316-2930-750N

IP 3100 ONE PIECE SHAFT	NOT AVAILABLE
IP 5100 ONE PIECE SHAFT	313-1500-004N
IP 7600 ONE PIECE SHAFT	316-1135-147N

## CODE 12

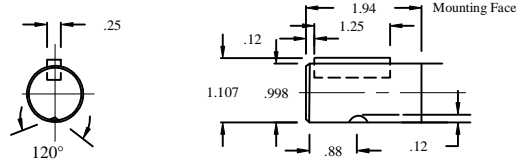
KEYED  $\frac{3}{4}$  □ -  $\frac{3}{16}$  KEY



GEAR WIDTH CODE	GEAR WIDTH INCHES	IP3100 SHAFT & GEAR PART NUMBER	IP5100 SHAFT & GEAR PART NUMBER	IP7600 SHAFT & GEAR PART NUMBER
NOT AVAILABLE				

IP 3100 ONE PIECE SHAFT	312 - 1135 - 152N
IP 5100 ONE PIECE SHAFT	NOT AVAILABLE
IP 7600 ONE PIECE SHAFT	NOT AVAILABLE

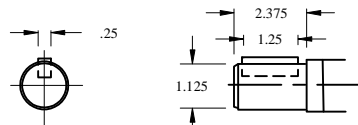
## CODE 43 - KEYED 1 □ - $\frac{1}{4}$ KEY - ANSI 25-1



GEAR WIDTH CODE	GEAR WIDTH INCHES	IP3100 SHAFT & GEAR PART NUMBER	IP5100 SHAFT & GEAR PART NUMBER	IP7600 SHAFT & GEAR PART NUMBER
05	$\frac{1}{2}$ "	//	//	//
07	$\frac{3}{4}$ "	312-2907-740N	//	//
10	1"	312-2910-740N	313-2910-740N	//
12	1 $\frac{1}{4}$ "	312-2912-740N	313-2912-740N	//
15	1 $\frac{1}{2}$ "	312-2915-740N	313-2915-740N	//
17	1 $\frac{3}{4}$ "	312-2917-740N	313-2917-740N	//
20	2"	312-2920-740N	313-2920-740N	//
22	2 $\frac{1}{4}$ "		313-2922-740N	
25	2 $\frac{1}{2}$ "		313-2925-740N	

IP 3100 ONE PIECE SHAFT	312-1500-400N
IP 5100 ONE PIECE SHAFT	313-1500-400N
IP 7600 ONE PIECE SHAFT	NOT AVAILABLE

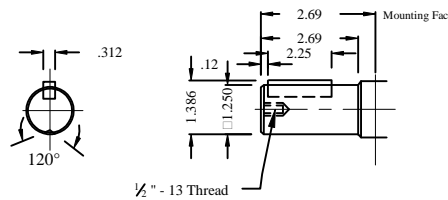
## CODE 02 - KEYED 1 $\frac{1}{8}$ □ - $\frac{1}{4}$ KEY



GEAR WIDTH CODE	GEAR WIDTH INCHES	IP3100 SHAFT & GEAR PART NUMBER	IP5100 SHAFT & GEAR PART NUMBER	IP7600 SHAFT & GEAR PART NUMBER
NOT AVAILABLE				

IP 3100 ONE PIECE SHAFT	NOT AVAILABLE
IP 5100 ONE PIECE SHAFT	391-1500-502N
IP 7600 ONE PIECE SHAFT	NOT AVAILABLE

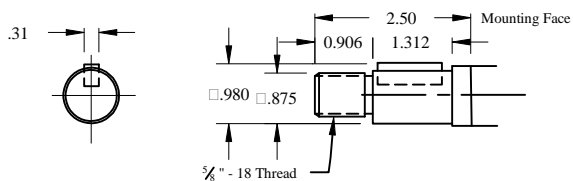
## CODE 73 - KEYED 1 $\frac{1}{4}$ □ - $\frac{5}{16}$ KEY C/W $\frac{1}{2}$ - 13 THREAD



GEAR WIDTH CODE	GEAR WIDTH INCHES	IP3100 SHAFT & GEAR PART NUMBER	IP5100 SHAFT & GEAR PART NUMBER	IP7600 SHAFT & GEAR PART NUMBER
NOT AVAILABLE				

IP 3100 ONE PIECE SHAFT	NOT AVAILABLE
IP 5100 ONE PIECE SHAFT	313-1500-502N
IP 7600 ONE PIECE SHAFT	NOT AVAILABLE

## CODE 90 - KEYED $\frac{7}{8}$ □ - $\frac{1}{4}$ KEY C/W $\frac{5}{8}$ " - 13 THREAD



GEAR WIDTH CODE	GEAR WIDTH INCHES	IP3100 SHAFT & GEAR PART NUMBER	IP5100 SHAFT & GEAR PART NUMBER	IP7600 SHAFT & GEAR PART NUMBER
NOT AVAILABLE				

IP 3100 ONE PIECE SHAFT	312-1135-171N
IP 5100 ONE PIECE SHAFT	NOT AVAILABLE
IP 7600 ONE PIECE SHAFT	NOT AVAILABLE