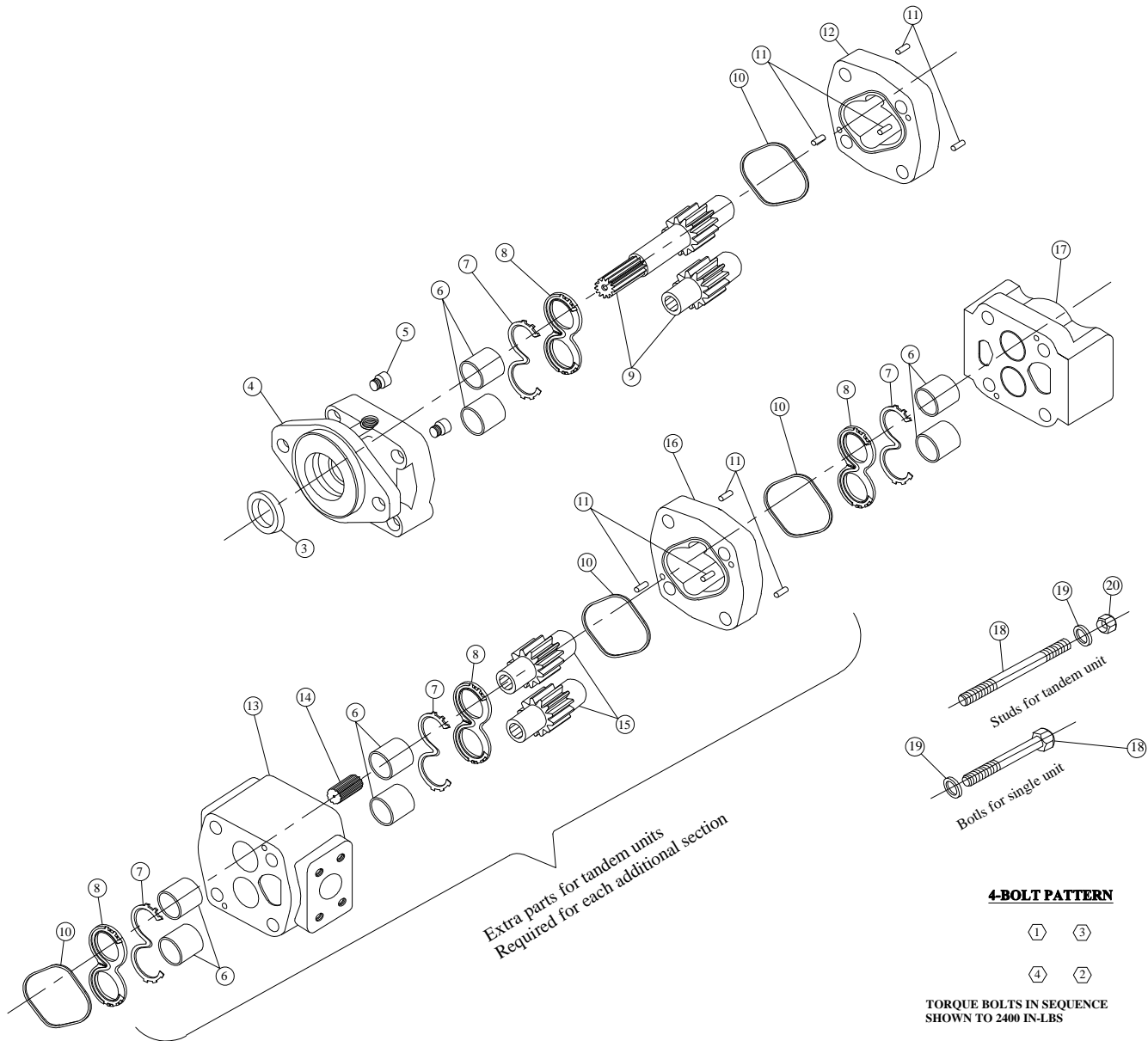
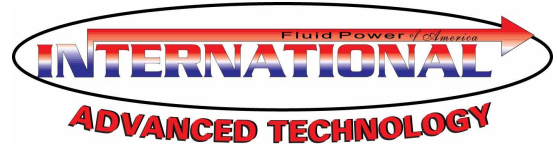


# IFP IP3150 PUMPS SERVICE PARTS INFORMATION



## DESCRIPTION & CODES

ITEM	DESCRIPTION	REQ'S	PART NO.	ITEM	DESCRIPTION	REQ'S	PART NO.
1				11	DOWEL PINS	4 or more	391-2682-071N
2				12	GEAR HOUSING	1	326-81xx-100N
3	SEAL	1	391-2883-151N	13	BEARING CARRIER	1	326-7xxx-100N
4	SHAFT END COVER	1	326-5xxx-xxxN	14	CONNECTING SHAFT	1	326-1133-100N
5	PLUG	4	391-2886-004N	15	MATCHED GEAR SET	1	326-28xx-000N
6	BUSHINGS	4 or more	391-0482-195N	16	GEAR HOUSING	1	326-81xx-100N
7	CHANNEL SEAL	4 or more	391-2881-871N	17	PORT END COVER	1	326-3xxx-100N
8	THRUST PLATES	4 or more	391-2185-963N	18	CAP SCREWS & STUDS	4	xx-BOLTS-xx IN
9	INTERGRAL DRIVE SHAFT AND GEAR SET	1	326-29xx-xxxN	19	WASHERS	4	
				20	NUT	4	
10	GASKET SEAL	1 or more	391-2884-968N				

TORQUE BOLTS IN SEQUENCE SHOWN TO 2400 IN-LBS