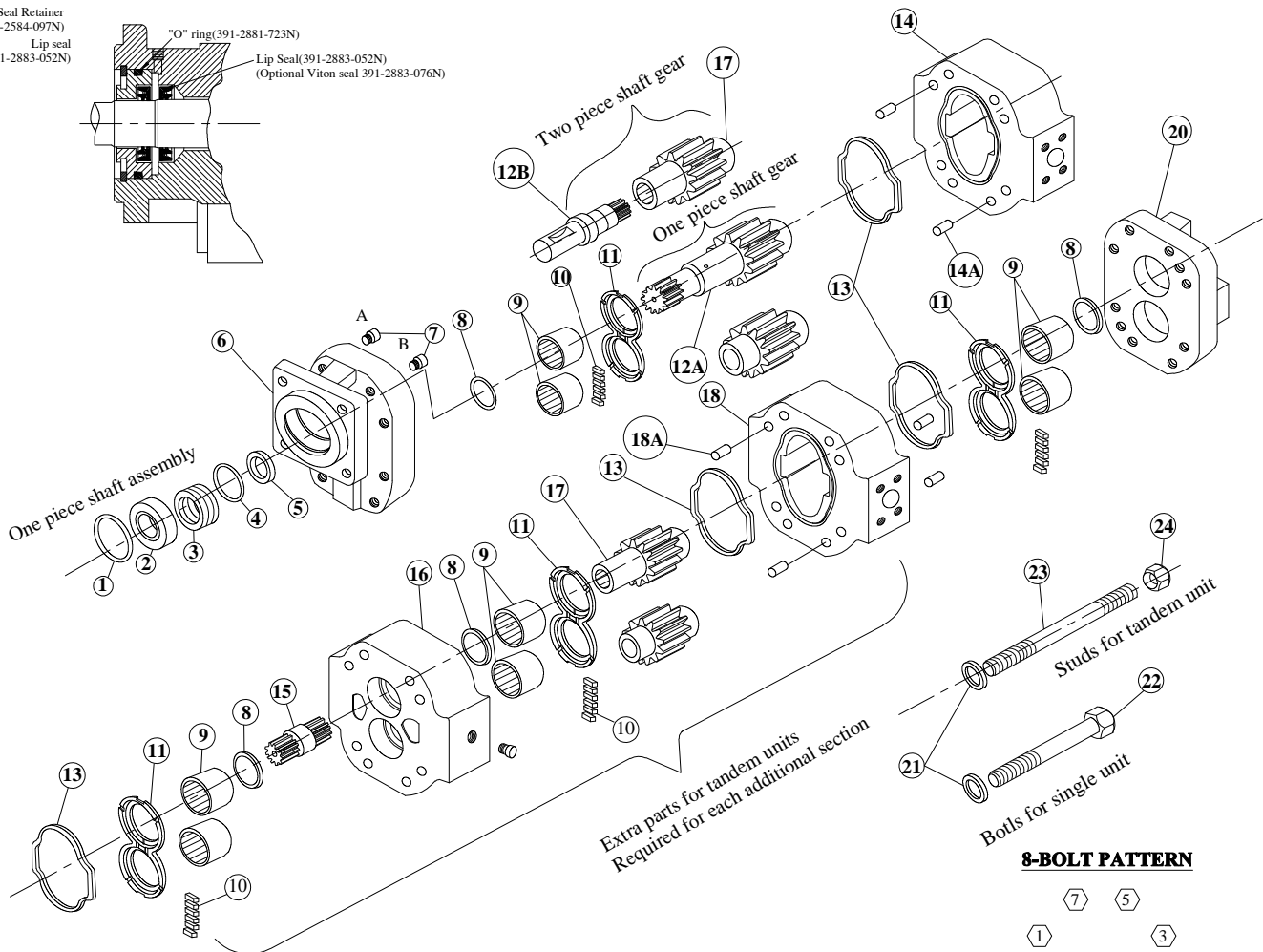
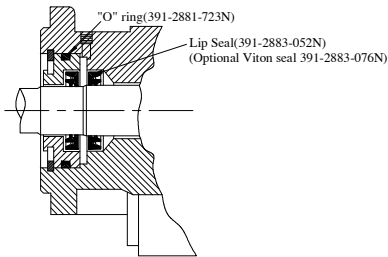


# IFP IP7600 PUMPS and MOTORS SERVICE PARTS INFORMATION

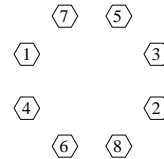


## DOUBLE SHAFT SEAL ASSEMBLY

Seal Retainer  
(391-2584-097N)  
Lip seal  
(391-2883-052N)



### 8-BOLT PATTERN



PLUG 7 IN POSITION **B** FOR CLOCKWISE ROTATION.  
PLUG 7 IN POSITION **A** FOR COUNTER CLOCKWISE ROTATION.  
CHECK VALVE IN BOTH POSITIONS FOR BI-DIRECTIONAL UNITS.

TORQUE BOLTS IN SEQUENCE  
SHOWN TO 2400 IN-LBS

### DESCRIPTION & CODES

ITEM	DESCRIPTION	REQ'S	PART NO.	ITEM	DESCRIPTION	REQ'S	PART NO.
1	SNAP RING	1	391-2686-025N	13	GASKET SEALS(PER HOUSING)	1 STRIP	391-2884-024N
2	OUTBOARD BEARING	1	391-0381-078N	14	GEAR HOUSING	1	316-82xx-100N
3	SEAL RETAINER	1	391-2584-082N	14A	DOWEL PINS(SERIES IP7600)	4	319-2884-050N
4	"O" RING	1	391-2881-457N	15	CONNECTING SHAFT	1 or more	316-1133-001N
5	SEAL	1	391-2883-052N	16	BEARING CARRIER	1	316-7xxx-100N
6	SHAFT END COVER	1	316-5xxx-xxxN	17	MATCHED GEARS SET	1	316-28xx-000N
7	Plug for Motors/ bi-directional pumps	1	391-3681-001N	18	GEAR HOUSING	1	316-82xx-100N
	Plug (pumps only)	1	391-2286-004N	18A	DOWEL PINS(SERIES IP7600)	4	391-2082-033N
8	RING SEAL (per gear section)	2	391-2585-011N	19	PLUG	1	391-2286-004N
9	ROLLER BEARINGS(per gear section)	2	391-0381-904N	20	PORT END COVER	1	316-3120-100N
10	POCKER SEAL	1	391-2282-052N	21	WASHERS	4	391-3784-028N
11	THRUST PLATES(PER GEAR SECTION)	2	391-2185-920N	22	CAP SCREWS(SINGLE UNITS)	4	391-1401-xxxN
12A	INTEGRAL DRIVE SHAFT	1	316-29xx-xxxN	23	STUDS(MULTIPLE UNITES)	4	391-1425-xxxN
	AND GEAR SET			24	NUT(MULTIPLE UNITS)	4	391-1451-076N
12B	CONTINENTAL SHAFT	1	316-xxxx-xxxN				