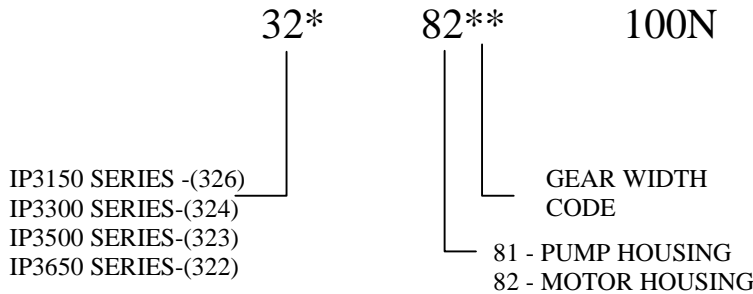


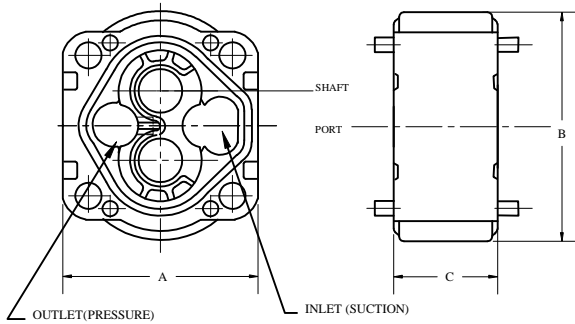
# IFP IP3150/IP3300/IP3500/IP3650 GEAR HOUSINGS



## GEAR HOUSING PART NUMBER NOMENCLATURE



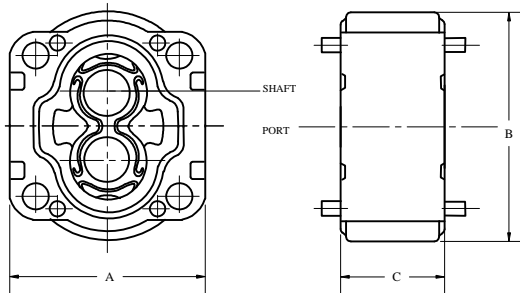
### PUMP GEAR HOUSING



### PUMP GEAR HOUSING PART NUMBER

Housing	PART NUMBER			
	IP3150	IP3300	IP3500	IP3650
05	326-8105-100N	324-8105-100N	323-8105-100N	322-8105-100N
07	326-8107-100N	324-8107-100N	323-8107-100N	322-8107-100N
10	326-8110-100N	324-8110-100N	323-8110-100N	322-8110-100N
12	326-8112-100N	324-8112-100N	323-8112-100N	322-8112-100N
15	326-8115-100N	324-8115-100N	323-8115-100N	322-8115-100N
17	326-8117-100N	324-8117-100N	323-8117-100N	322-8117-100N
20	326-8120-100N	324-8120-100N	323-8120-100N	322-8120-100N
22			323-8122-100N	322-8122-100N
25			323-8125-100N	322-8125-100N

### MOTOR GEAR HOUSING



### MOTOR GEAR HOUSING PART NUMBER

Housing	PART NUMBER			
	IM3150	IM3300	IP3500	IP3650
05	326-8205-100N	324-8205-100N	323-8205-100N	322-8205-100N
07	326-8207-100N	324-8207-100N	323-8207-100N	322-8207-100N
10	326-8210-100N	324-8210-100N	323-8210-100N	322-8210-100N
12	326-8212-100N	324-8212-100N	323-8212-100N	322-8212-100N
15	326-8215-100N	324-8215-100N	323-8215-100N	322-8215-100N
17	326-8217-100N	324-8217-100N	323-8217-100N	322-8217-100N
20	326-8220-100N	324-8220-100N	323-8220-100N	322-8220-100N
22			323-8222-100N	322-8222-100N
25			323-8225-100N	322-8225-100N

### GEAR HOUSING DIMENSIONS

HOUSING	IP3150	IP3300	IP3500	IP3650
A=	4.19	4.81	5.75	6.25
B=	4.75	5.88	6.00	7.25
Thrust Plates	0.40	0.50	0.50	0.50
C=gear width +Thrust Plates				
Dimension "C"				
05	.92	1.00	1.00	//
07	1.14	1.25	1.25	1.25
10	1.40	1.50	1.50	1.50
12	1.64	1.75	1.75	1.75
15	1.90	2.00	2.00	2.00
17	2.14	2.25	2.25	2.25
20	2.40	2.50	2.50	2.50
22	//	//	2.75	2.75
25	//	//	3.00	3.00