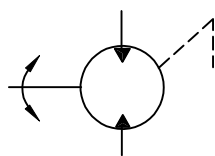


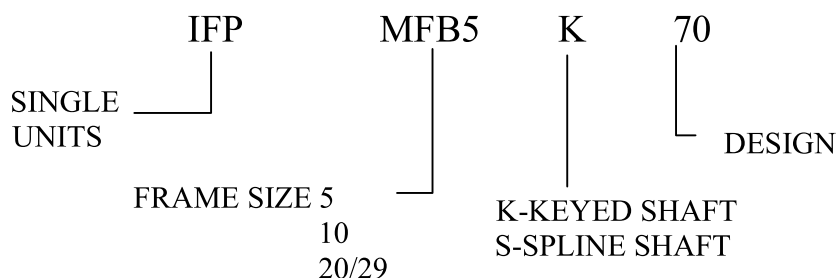
IFP FIXED DISPLACEMENT PISTON MOTORS MFB5/10/20/29



- High Efficiency
- Wide Speed Range
- Extended Life
- Reversible
- Compact
- Quiet Operation
- High Operating Pressure



◆ Piston Motor Ordering Specification



TECHNICAL DATA

Values based on using anti-wear type petroleum oil 150 SUS at 100°F and 0 PSI inlet pressure

Model series	Theoretical Displ. cu. in/rev. (cu. cc/rev.)	Flow USGPM (LPM) @Rate RPM	Rated Operating Speed (RPM)		Pressure PSI (Bar)		Max Output Torque lb.in (NM)	Weight lb. (kg)
			Rated	Max	Rated	Max		
MFB5	0.643 (10.5)	5.0 (19.0)	1800	3600	1500 (103)	3000 (207)	270 (30.5)	11 (5.0)
MFB10	1.29 (21.12)	10.0 (37.9)	1800	3200	1500 (103)	3000 (207)	568 (64.1)	21 (9.5)
MFB20	2.61 (42.8)	20 (75.7)	1800	2400	1500 (103)	2500 (172.4)	910 (102.8)	49 (18.5)
MFB29	3.76 (61.6)	29 (109.8)	1800	2400	1000 (69)	2000 (138.0)	1090 (123.7)	49 (18.5)

IFP offers a complete line of economical high performance fixed displacement piston motors providing speeds up to 3600 RPM and output torques to 1190 lb. in. in a compact light weight package. Application for MFB motors can be continuous or intermittent duty with MFB motors offer high efficiency inherent to piston units with a wide speed range from 300 to 3600 RPM at the maximum torque rating. Housing must be kept full of fluid at all times to provide internal lubrication.

WARNING

Before starting fill motor case with system fluid through uppermost drain port. Housing must be kept full at all times to provide internal lubrication.