

IFP MD20-Design "80" Manually Operated Monoblock Valves



FEATURES

- * Adjustable Balanced Piston Relief Valve
- * Power Beyond / Closed Center Available
- * Integral Load Holding Check Valve
- * Optional Pilot Operated Check Valves
- * Single / Double acting & Motor spools
- * Spring Return or Detent



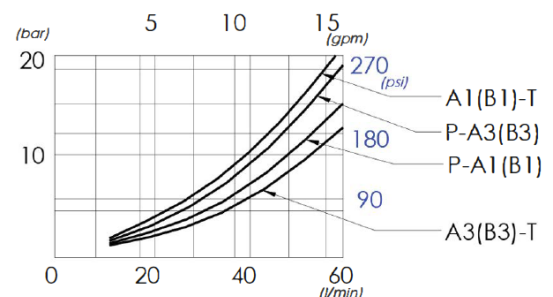
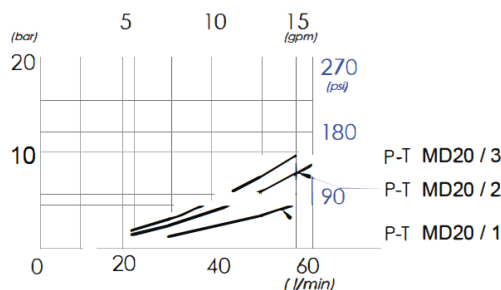
MD20 ORDERING CODE

IFP MD 20 | **1** | **C** | **S** | **D** | **P** | **80**

Monoblock Valve | **Valve Series** 20 = 15 GPM | **Number of Spools** 1 = 1 Spool, 2 = 2 Spools, 3 = 3 Spools | **Spool Type** C = Double Acting, M = Motor Spool | **Port Type** S = SAE (Std), N = NPT *Factory Lead Time, B = BSP *Factory Lead Time | **Spool Function** No Code = Spring Return, D = Deterent | **Tank Port** No Code = Open Center, C = Closed Power, P = Power Beyond | **Design Number** 80

Monoblock	MD20
Maximum Flow	15 US gpm (57 l/min)
Recommended Flow	12 US gpm (45 l/min)
Maximum Pressure	4568 PSI (315 bar)
Maximum Back Pressure	145 PSI (10 bar)
Leakage @ 1500 PSI (100 bar)	2 cm ³ /min
Weight MD50-1	6.6 lbs (3 kg)
Weight MD50-2	10.6 lbs (4.8 kg)
Weight MD50-3	14.2 lbs (6.45 kg)

Valve Ports			
Thread	Port - A&B	Thread	Thread
SAE	SAE-10	SAE-12	SAE-12
NPT	1/2"	3/4"	3/4"
BSP	1/2"	3/4"	3/4"



Pressure Drop